

St Patrick's Church, East Gosford Foyer Proposal

18 October 2020

studio
tierra



The Brief

As part of St Patrick's Welcome Ministry proposal, the foyer of the church has been identified as a place for potential refurbishment to promote engagement.

The foyer should be **open** and **inviting**, be a **place of welcome** and embody the **vibrant community** of the parish.

The existing piety stall and partition wall between the foyer and the nave of the church are two primary concerns. Understanding financial restraints, considerations should be made for potential staging, exempt development and community participation.

In addition, wayfinding throughout the site should be considered as an extended welcome from various points of access to draw people in towards the church.



Entry Threshold

'And When Churches Are to be Built...'

213 Architecturally and symbolically, doorways and thresholds are significant places, linking two different kinds of space. In a church, the transitional or liminal space of the narthex marks the movement from introductory activities and rituals to the sacred action of the liturgy itself where the Body of Christ is constituted for worship and where the people enter into the mystery of God's saving action.

216 The narthex is a space through which people move rather than one for gathering or assembly. Nevertheless, some of the ritual action which takes place there needs to be visible from the body of the church and allow for the active participation of the assembly. The entrance should therefore give onto some internal space before seating for the people begins.



Entry Threshold

'Fit for Sacred Use'

953 A community blessed with significant church doors, perhaps carved in timber or even cast in bronze, should honour them and treat them with respect for all that they signify.

958 The decision to rebuild or enlarge a narthex provides the opportunity to enhance the beauty of the entrance and draw people into the sacred. The quality of the space is such that passing through it might become a transformative experience.

963 The narthex can easily become a storage space for lost property, miscellaneous tables and other items of furniture. The community requires consistent discipline to remove any clutter.



York Street Facade



1960s



Present



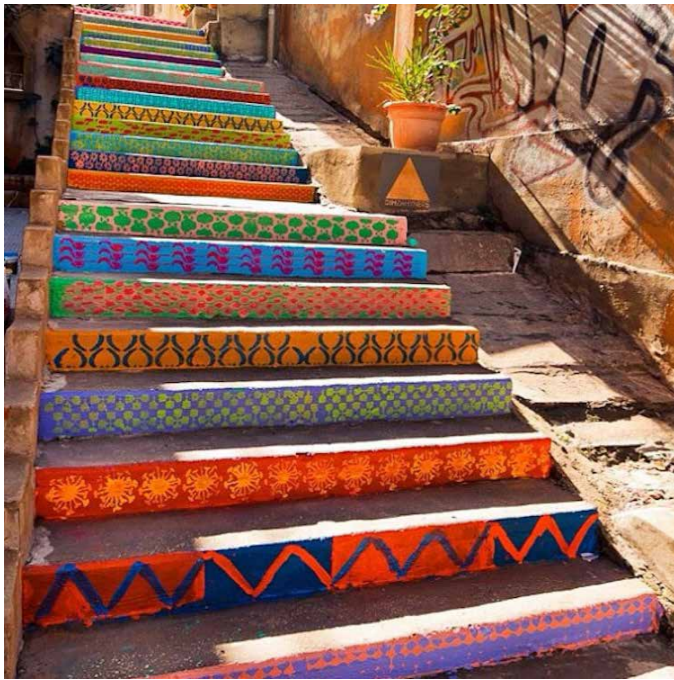
- > Major Pedestrian Access
- - -> Minor Pedestrian Access
- Visible Street Frontages



Wayfinding
Alteration

- A Stairway from School
- B Activated Facade
- C Foyer Entry
- D Corner Presentation to Cafes

A Stairway from School



A seasonal artwork and an opportunity for community engagement.

The stairs could be used to share messages, create an image or reflect particular liturgical seasons and may be an instrument to visually connect the church with the school.

B Activated Facade



Recognising the courtyard and church facade as an opportunity for engagement.

Facing the school access, parish office and Jordan room, the church is most active on this face. By integrating a changeable noticeboard or directional sign on this face is an opportunity for engagement.

C Foyer Entry



The foyer as a place of transition and the entry into prayer.

Removing the clutter of the main foyer allows for a transformative experience between the outside world and the inner sanctuary of the church. This space should be beautiful, inspiring, light-filled and open

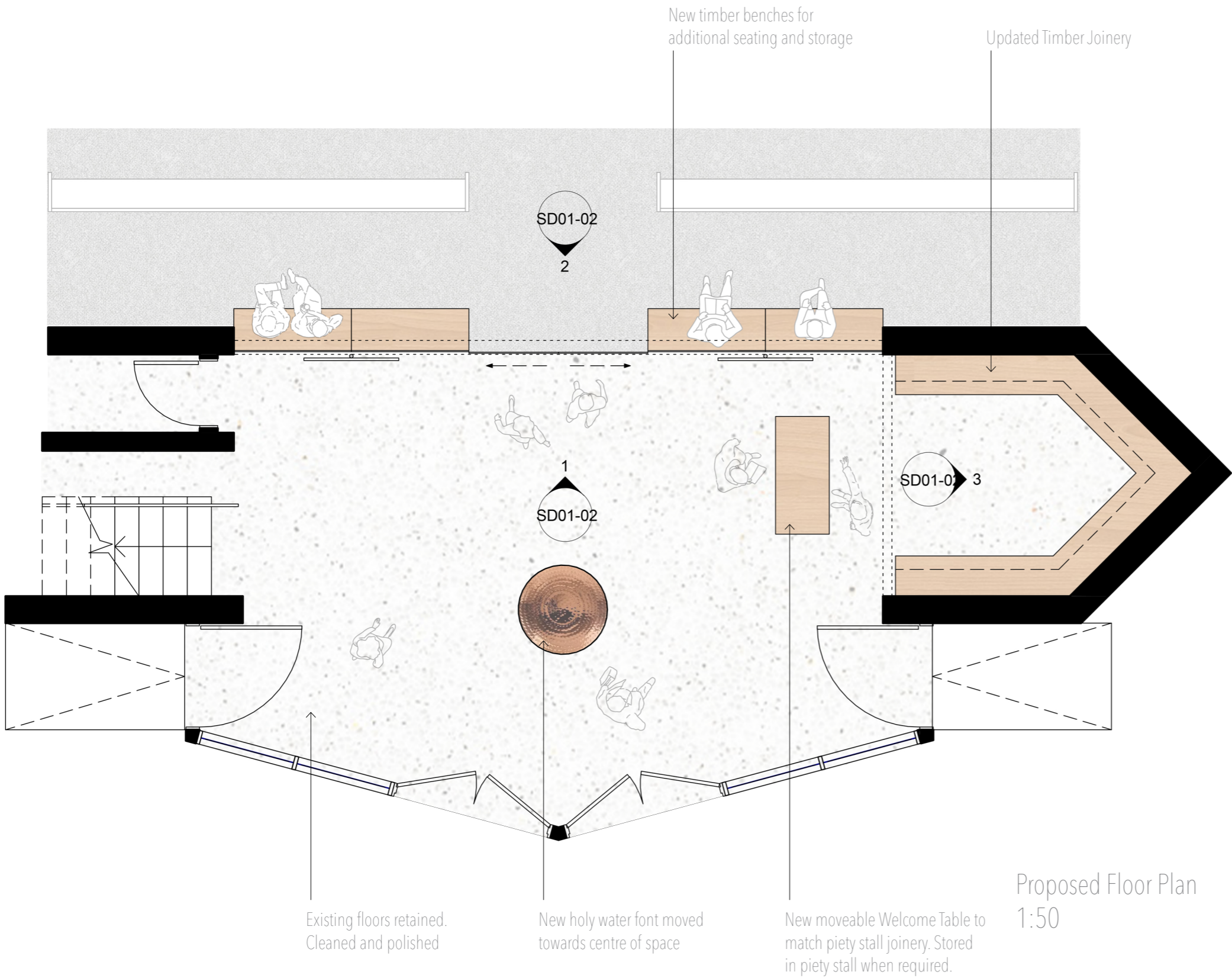
D Corner Presentation

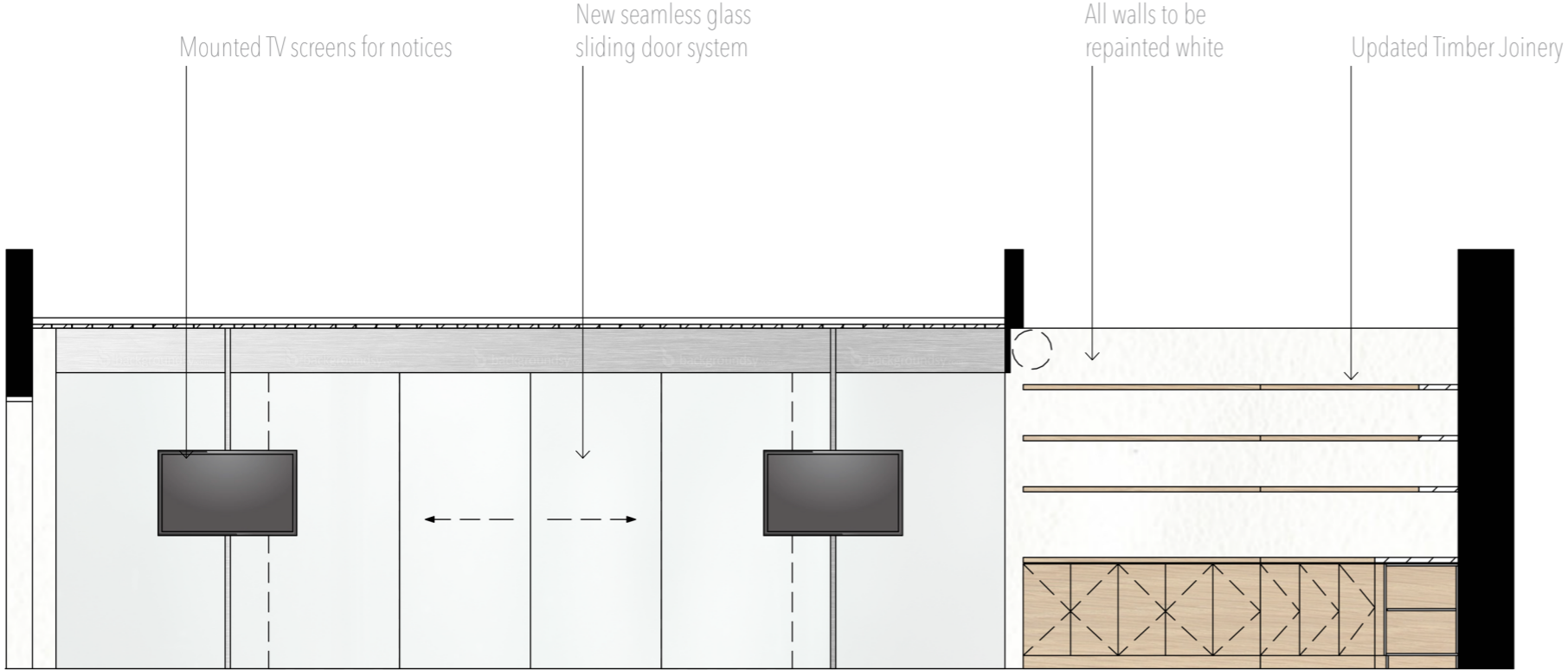


The openness of the space invites frontage to the cafes, but could also be a prayerful garden space.

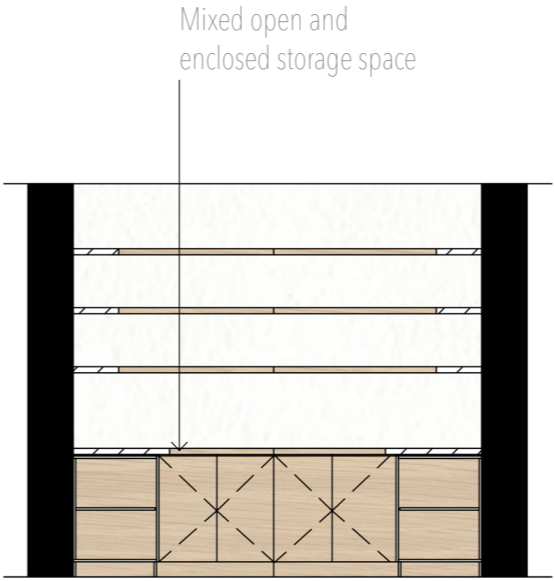
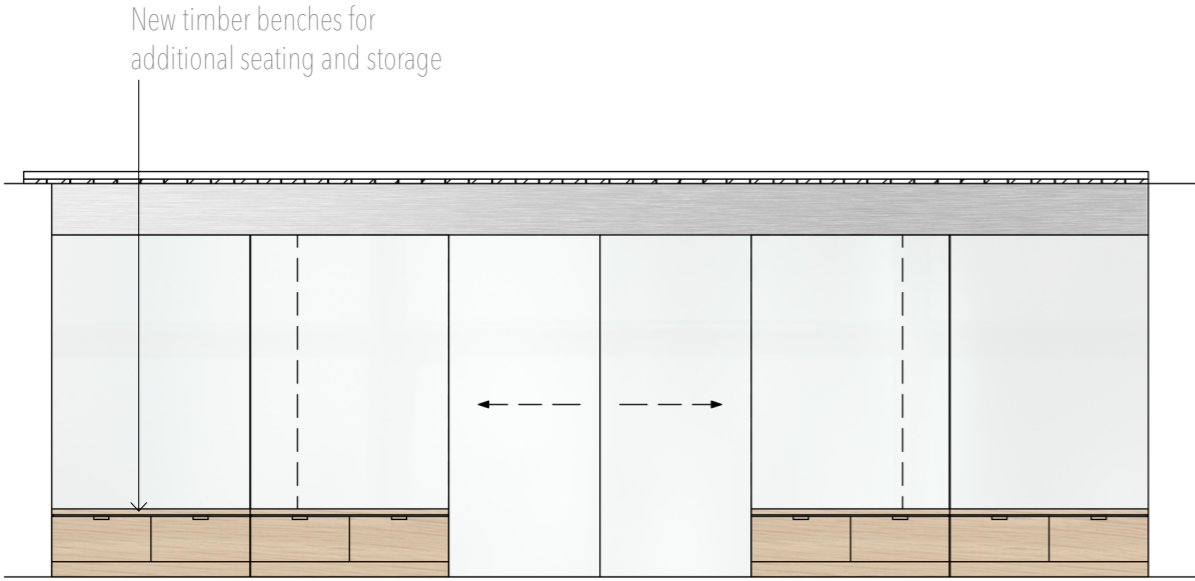
Using landscaping to enhance the existing 'green' character of this area, it could become a way of the cross, a meditation labyrinth, or simply a quiet place to sit.





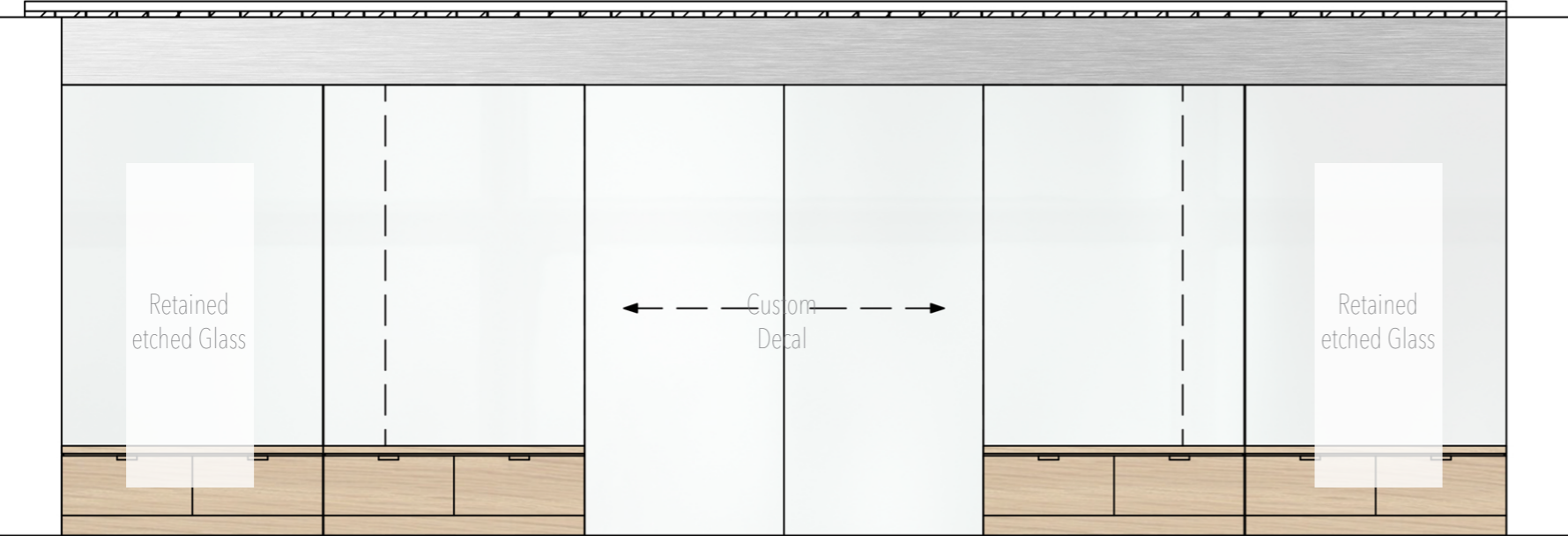


Foyer towards Church 1:50

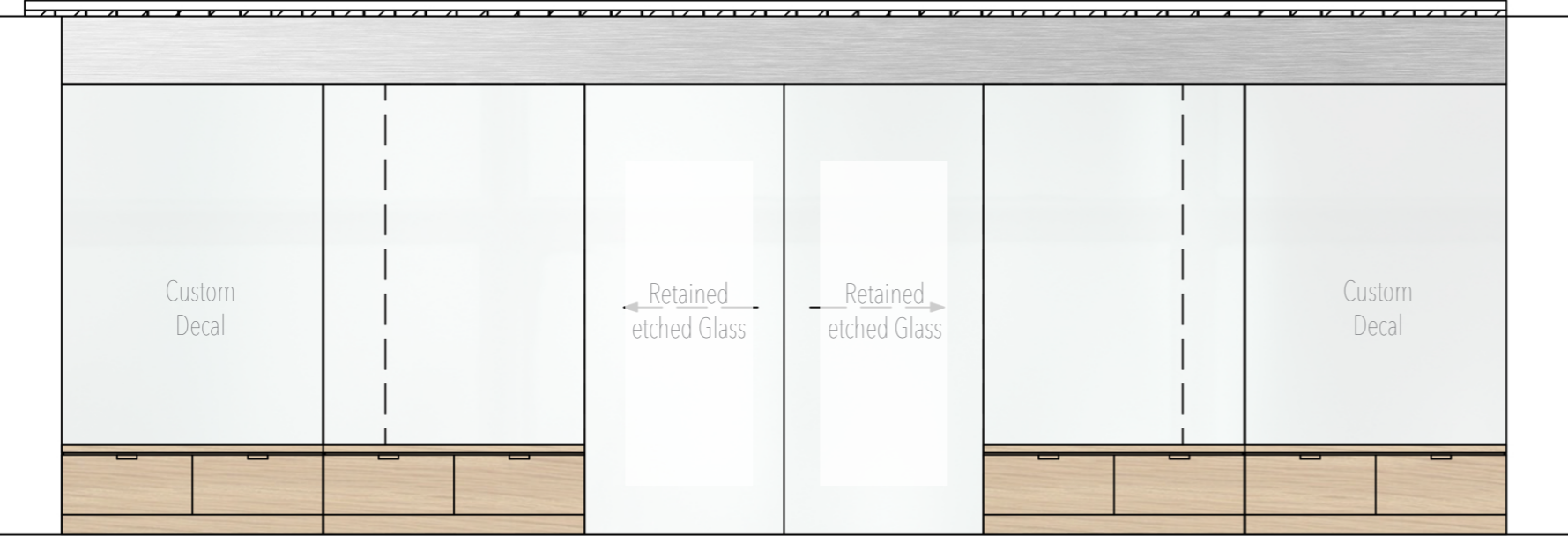


Church towards Foyer 1:50

Piety Stall toward Street 1:50



Option 1



Option 2



Materials Palette

